

SECTION 33, T.7N., R.1W., S.L.B. & M.

IN NORTH OGDEN CITY & WEBER COUNTY

PREFIX: 17-073

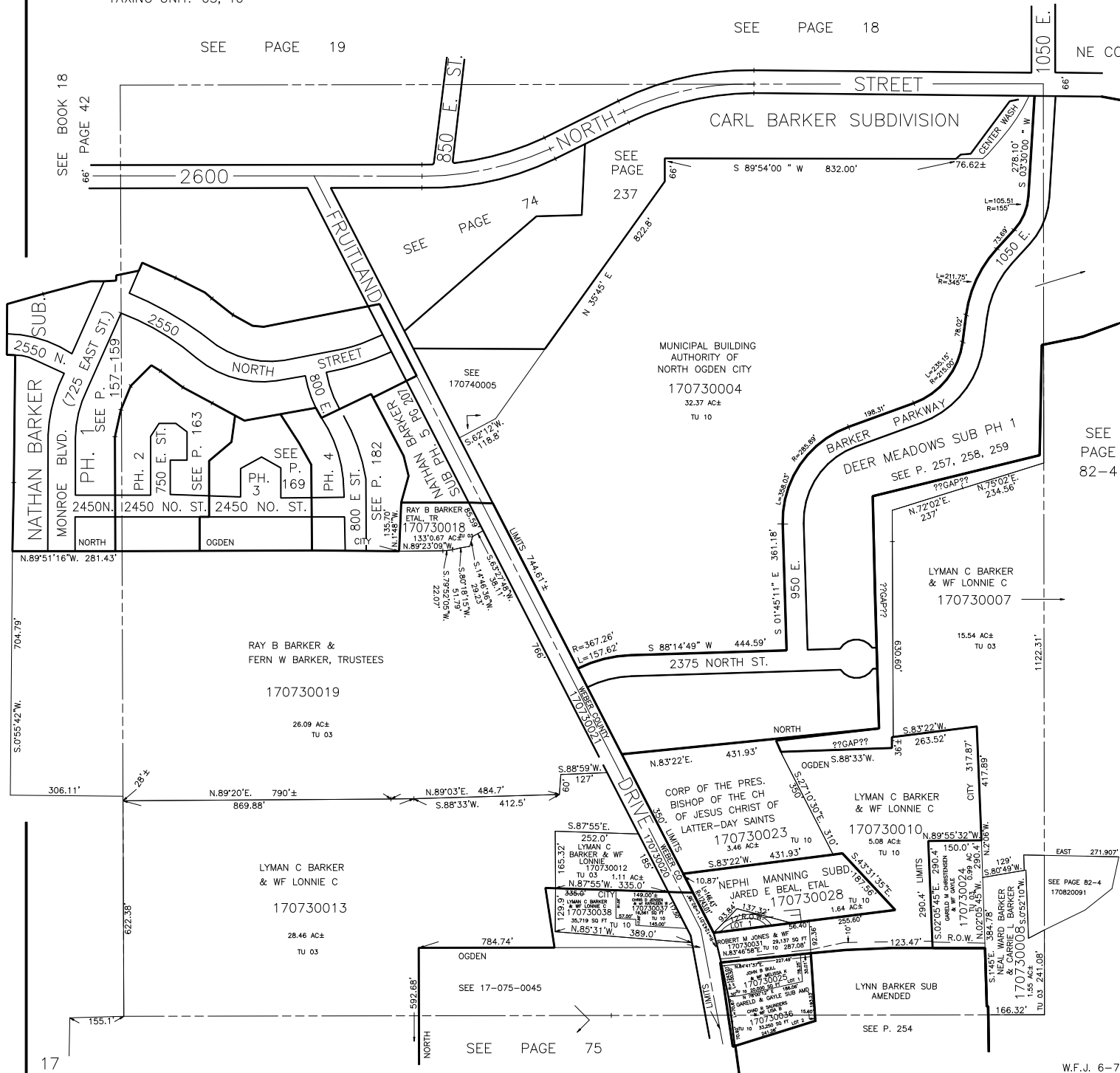
SCALE 1" = 200'

TAXING UNIT: 03, 10

SEE PAGE 18

SEE PAGE 19

NE COR SEC 33



SEE BOOK 18
PAGE 42

SEE PAGE 74

SEE PAGE 237

SEE PAGE 182

SEE PAGE 169

SEE PAGE 163

SEE PAGE 169

SEE PAGE 163

SEE PAGE 169

SEE PAGE 163

SEE PAGE 169

SEE PAGE 163

SEE PAGE 169

SEE PAGE 163

SEE PAGE 169

SEE PAGE 163

SEE PAGE 169

SEE PAGE 163

SEE PAGE 169

SEE PAGE 163

SEE PAGE 169

17

SEE PAGE 75

W.F.J. 6-74